

Lighting Control

## PIR movement sensor

Type 41-580



enocean®

- Zero-energy sensor with solar cell
- Wireless communication - easy installation
- 360°/Ø12 meter detection range
- Controlled by wireless receiver and wireless push-buttons



Minilux  
Series

## Wireless and batteryless Minilux PIR movement sensor type 41-580.

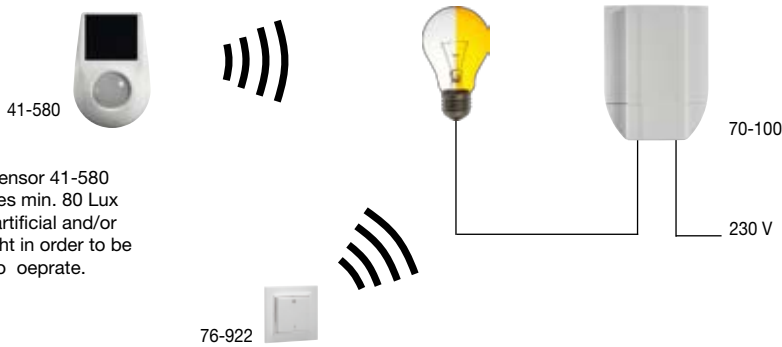
### Applications

- Zero-energy solutions for office environments
- In connection with retrofit or change of office layout
- Offices with glass or rooms where wiring is difficult
- Corridors



### Principle - movement sensor solution on/off

- Manual switch on/off by push-button - automatic switch off by PIR sensor

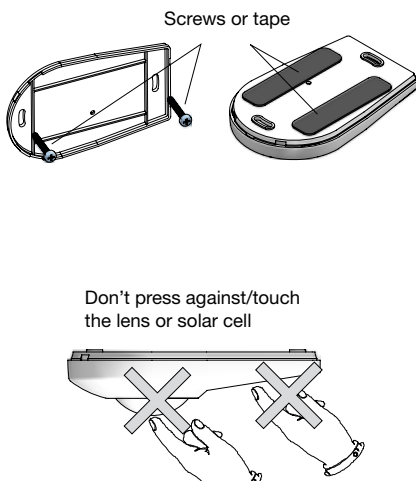


NB. Sensor 41-580 requires min. 80 Lux from artificial and/or daylight in order to operate.

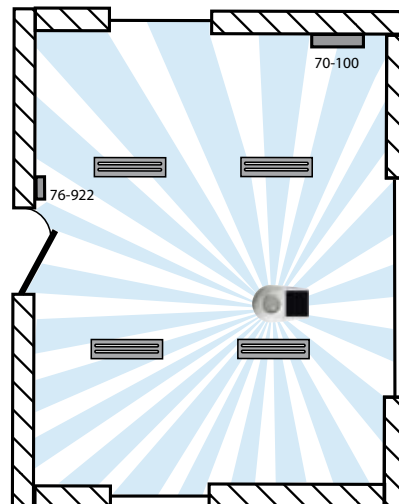
### Advantages

- Zero-energy solution
- Wireless and battery less - very easy to install
- Manual operation possible
- Modern design

### Mounting



### Sensor locations



### Product facts

- Setting of time by wireless receiver
- Detection angle 360°/7 m (38 m<sup>2</sup> at mounting height 2,5 m)
- RF range - 100 m in open field /30 m in buildings
- EnOcean-transmitter STM 110

### Order numbers:

Product	Type	EAN no.
Minilux PIR-sensor Solar/EnOcean	41-580	5703102 203991
Wireless receiver	70-100	5703102 204851
Wireless/battery less push-button	76-922	5703102 201737